

ZENTECH AUTOMATION COMPANY PROFILE (Electrical & Automation Project Company)



INDEX

S.No	Topic	Page No.
1.	Company Overview	3
2.	About US	4
3.	Delta AC Drive	5
4.	INVT AC Drive	6
5.	Swastik PID Temperature Controller	7
6.	Signal PID Temperature Controller	8
7.	Proximity Sensor	9
8.	Electric Panel	10
9.	Contact Us	11

ZENTECH AUTOMATION PROFILE

- We can offer the widest and most extensive quality solutions on different products as per our client's budget.
- We provide exclusive support for complete Allen Bradley family series. Both for Material & on site Commissioning Support will be available.
- We specialize in mainly Allen Bradley platform on different applications across the industry. We provide technical Consultancy for turnkey projects in the field of Electrical Power and Industrial Automation.
- We undertake Supply, Installation, Testing & Commissioning of various projects in the field of Electrical and Automation with our own Panel building capacity.
- We also accommodate bulk general supply orders for Automation & Electrical (industrial & commercial) goods as per the client needs on very competitive market rates.
- Customized Automation Solution for most of the applications like Machine Based systems, Power Based, Special Purpose machines, motion Control.

We have a vision to provide a platform where most of the Industrial Aspects like new projects, machine automation, and Customized automation solution, turnkey based Electrical or Automation systems can be offered at a very reasonable cost but not compromising quality at any possible level. We are expanding our infrastructure and domain continuously to provide better services & solution on almost all platforms keeping in view the future market requirements & up-gradations.

We have a team which is very unique & different than others in every aspect of professional & individual approach. Our teams approach towards the work is much more focused & coordinated in every aspect. We do not leave any fragment & neither have we given our 'CLIENT' an opportunity to complain about our services. We never believe in saying 'NO' to our customer's demand, which is what makes us different than any of our competition in this field? On top of that our exceedingly competent & hard working professional team is always available to solve any set of complexity In project or at site in shortest possible duration which not most of the companies are capable of in relation to us.

Our broad range of quality products and technologies are designed to improve your productivity and flexibility, while enabling you to select the right product for your application.

- **Delta AC Drive**
- **INVT AC Drive**
- **Swastik PID Temperature Controller**
- **Signal PID Temperature Controller**
- **Proximity Sensor**
- **Electrical Panel**

About Us



We are a Group of Young, Dynamic, Experienced & Proficient Engineers having sound knowledge in the field of various aspects in Electrical, Automation & instrumentation Engineering.

We have handled numerous projects in the different parts of country. Projects that we had executed so far Comprise of Industrial Projects like in Steel Industry, Cement Industry, Electrical Substations, Motion Control, Machine Automation, Automotive Industry and other various different production houses.

One of the remarkable edges that we have on the other competitors is that we have a sound support of responsible Technical team with us at the time of handling the technical issues at various site situations which is undoubtedly a very important characteristic that a project team must have in order to run the project smoothly.



Delta AC Drive

These devices are precisely engineered under the supervision of proficient professionals who are well-versed in this domain. Used in different applications to run the motor at various speeds, this drive is available in diverse technical specifications for the ease of the clients. To deliver an error free range, we pack our DELTA AC Drive using qualitative packaging material.

With modern Power Electronics & advanced Microprocessor Technology Delta's AC Motor Drives are able to efficiently Control Motor Speed, Improve Machine Automation & Save Energy. Taking advantage of our strong position in Power Electronics Technology, Delta's VFD Series of AC motor drives have evolved rapidly.

Features: -

- Low-noise operation
- Durable
- User friendly
- Robust construction



INVT AC Drive

In order to cater the variegated needs of our patrons, we are able to offer a wide array of INVT AC Drives. All these Drives are sourced from renowned and certified vendors of the market. The drives have wobble running units that helps in enhancing its working speed. Our quality inspectors ensure that only quality checked drives get delivered at Customer's premises within the promised time limit. Furthermore, INVT AC Drives we offer are known in the market for their excellent features such as:-

Features:-

- Low power consumption
- Longer functional life
- Easy installation
- High durability



Swastik PID Temperature Controller

This controller is precisely manufactured under the stern supervision of our vendor's skilled professionals by utilizing advanced technology and quality assured components. Offered controller is used for changing the temperature of the space. Our product array includes Automation Temperature Controllers, Programmable logic controller and PID Temperature Controller. Moreover, clients can purchase this Temperature Controller from us at pocket friendly prices.

Features:

- Excellent functioning with longer service life
- Requires less maintenance
- Easy to operate and user-friendly design
- Made from pristine quality components



Signal PID Temperature Controller

Our company, Zentech Automation, has over a decade of experience of this industry and has emerged as one of the leading suppliers of a broad range of **PID Temperature Controller**. These temperature controllers are procured from reliable vendors of the industry, who manufacture these using superior quality materials. Offered temperature controllers are widely demanded by various chemical industries and laboratories, as these help in measuring and detecting change of temperature. Moreover, our esteemed customers can get these **PID Temperature Controllers** at rock bottom prices.

Special Attractions:

- Offered temperature controllers are recognized for their unmatched performance and easy installation.
- Our temperature controllers are fitted with digital screens, which makes temperature reading a lot easier.
- These temperature controllers are acknowledged for their durability and simple operation.
- Further, our temperature controllers are preferred, owing to their less power consumption and negligible maintenance.
- Our team of quality experts check these temperature controllers on every parameter to ensure flawless finish.
- Moreover, customers can obtain these temperature controllers in various technical specifications, according to their choice.

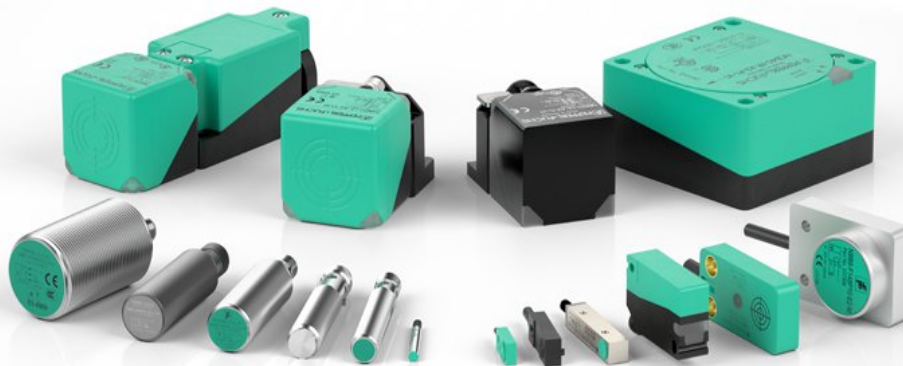


Proximity Sensor

A **proximity sensor** is a Sensor able to detect the presence of nearby objects without any physical contact. Having extensive know-how of the company, we are able to cater an exclusive array of Inductive Proximity Switch. This switch is used for detecting the presence of nearby object without any physical contact. Our provided switch is manufactured as per the instructions provided by our vendor's experts using supreme quality raw materials and cutting-edge technology as per market norms. In addition, the offered Inductive Proximity Switch is tested by our specialized quality inspectors before dispatching at clients premises.

Features:

- Easy to install
- Excellent strength
- Rugged structure
- Longer service life



Electrical Panel

A distribution board (also known as panel board or breaker **panel**) is a component of an **electricity** supply system which divides an **electrical** power feed into subsidiary circuits, while providing a protective fuse or circuit breaker for each circuit in a common enclosure.

A **distribution board** (also known as **panel board** or **breaker panel**) is a component of an electricity supply system which divides an electrical power feed into subsidiary circuits, while providing a protective fuse or circuit breaker for each circuit in a common enclosure. Normally, a main switch, and in recent boards, one or more residual-current devices (RCD) or residual current breakers with over-current protection (RCBO), are also incorporated.



Company Contact Details

For Automation Products & Electrical Products

Mr. R. P. Sharma - Mob: 9015559195, 9971150277, Mr. R.K. Sharma-Mob: 9999023965
A 28, 3rd Floor, Canara Bank building, Near By GTK Bus Depot,
Opp.- Sanjay Enclave, Ramgarh, Delhi-110033

E-mail:- zentechautomation@gmail.com
zentechelectrical@gmail.com

Sales Executive

Mr. Vivek Aggrawal -Mob: 9718249966

For General Enquiry

Mr. Umesh Saxena -Mob: 9718159932

E-mail: umesh@zentechautomation.com

Visit Us for Detailed product over view at:-

<http://www.zentechautomation.com>

<http://www.acdrivesdelhi.in/>